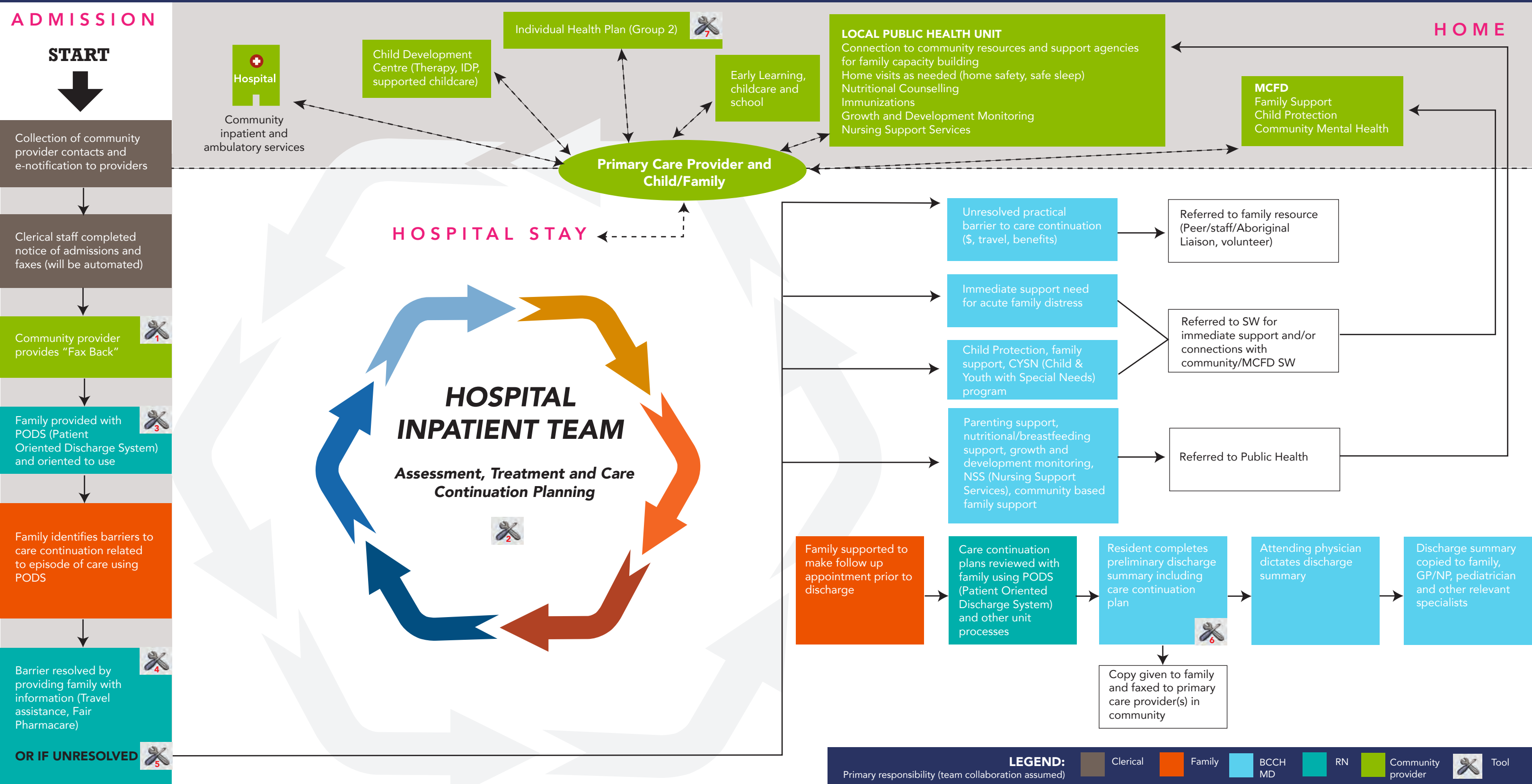


FUTURE STATE CARE CONTINUATION MODEL – NON CHRONIC AND CHRONIC/NON COMPLEX CHILDREN



Care Continuation processes are the same for Group 1 and Group 2 patients, however the number of providers involved and therefore intensity of activity in those processes increases in Group 2.

GROUP 1

Child has **non chronic** illness expected to last less than 1 year. Children can typically have their post discharge service needs met by Tier 1, 2 or 3a service. May use health services beyond what is typical for a child for a limited time. Psychosocial or service system complexities may need to be addressed to meet continuing care needs. **Children are not likely to need ongoing care from BCCH.**

GROUP 2

Child has **chronic condition** expected to require ongoing team-based services for a period over a year. Children can typically have their service needs met by Tier 2 or 3a services. May require intermittent consultation with Tier 4 teams. Examples include diabetes, Crohn's disease, asthma, etc. May or may not have significant psychosocial system barriers in addition to medical complexity.